

Log of

U.S.S. Kershaw

APA 176

*This Being
A
Record*

of the

Personnel & Travels

of

The United States Ship,

Kershaw, APA 176

1945

TO

All Who Made the

Amphibious Force Motto

DESTINATION TOKYO

Come True

This Book Is Dedicated



SEASON'S GREETINGS

ALLEN GEORGE DAVENPORT

Captain U.S.N.R.



THE U.S.S. KERSHAW

APA 176

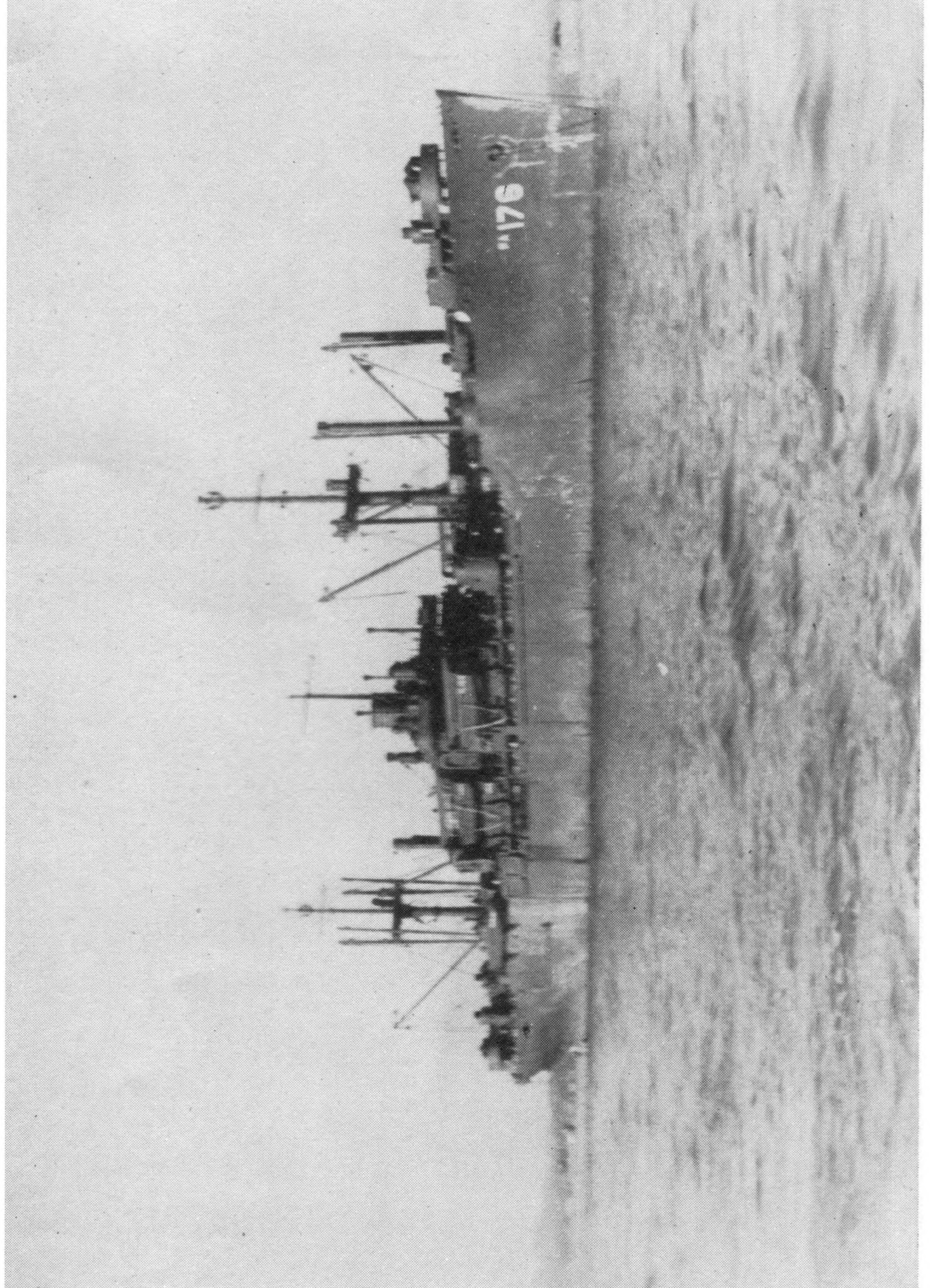
Flagship of Transport Division 44

Transport Squadron 15

Amphibious Group Five

Third Fleet





CONTENTS

Frontispiece	1
Dedication	3
Affiliation of U.S.S. Kershaw	4
Former Division Commanders	7
A Few Words from the Captain	8
The Staff	10
Personalities	13
Crossing the Line	14
Highlights	15
Cruise of the U.S.S. Kershaw	16-17
Notes for a History	19
Japan	23
Ship's Activities	24
Officers & Men	26
Roster of Officers & Men	29



Captain
F. M. O'Leary, U.S.N.
Division Commander
Trans. Div. 63
Formerly Aboard the Kershaw

Captain
J. H. Seyfried, U.S.N.
Former
Division Commander
Trans. Div. 44



A FEW WORDS FROM THE CAPTAIN

The motivating idea in compiling the LOG OF THE KERSHAW was to place in concrete form a concise record of the U.S.S. KERSHAW which could be easily retained by all of the officers and men who served on her as a ready reference and keepsake in years to come.

The pictures and scrapbook which I have kept of my Naval activities during World War Number 1, 1917-1918, and following it, become more of a treasure to me as the years progress. The storms and unpleasant times now seem insignificant and dim in retrospect, but the ports visited, the associations and friendships made and the pleasant times are well remembered and still enjoyed.

When we placed the KERSHAW in commission, December 2, 1944 at Astoria, Oregon, eighty-five per cent of the officers and crew had never been to sea before. Great credit is due all hands for their all-around ability, initiative and loyalty to duty which made it possible to learn their assignments in a remarkably short time and thereby caused the KERSHAW efficiently to carry out the duties assigned.



CAPTAIN A. G. DAVENPORT

I wish to compliment and express my appreciation to all the officers and crew, Flag included, for the splendid manner in which each one has performed his duties. I shall always be interested in your welfare and wish you a successful future.

A. G. DAVENPORT, Captain, USNR.,
COMMANDING

THE STAFF

The Staff of Transport Division FORTY-FOUR was assembled at the Amphibious Training Base at Coronado during the summer of 1944. Captain Joseph H. Seyfried, Division Commander, was given eleven officers and thirty-two men to assist him in the difficult tasks ahead. In mid-September the Staff was ordered to Astoria, Oregon, there to board the U.S.S. MELLETTE, which was commissioned on 27 September. After shakedown and training exercises the ship put in at San Pedro, and the Staff received orders to transfer to the U.S.S. HINSDALE, which had just been commissioned in the Los Angeles shipyards. After shakedown the HINSDALE, on 30 November, set sail for Pearl Harbor.

On 6 December the ship steamed into the harbor where Jap infamy first made its mark, and the Staff commenced its work of directing and co-ordinating the training activities of the ships of the Division preparatory to the invasion of Iwo Jima, in which they participated. After completion of this operation, the ships of the Division returned to Saipan, which became one of the staging areas for the Okinawa campaign. While here



CAPTAIN LEONARD B. AUSTIN

the U.S.S. KERSHAW was assigned to Transport Division FORTY-FOUR and took part in the training exercises pointing toward what was to be the last assault landing of Japanese territory.

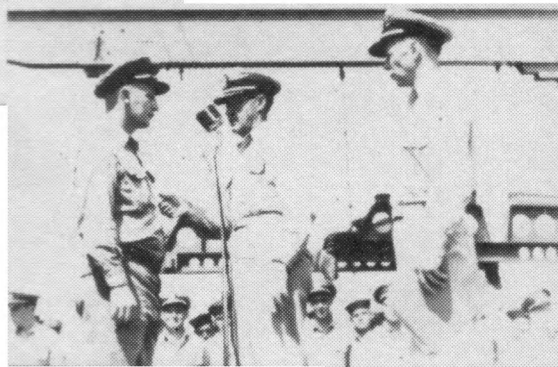
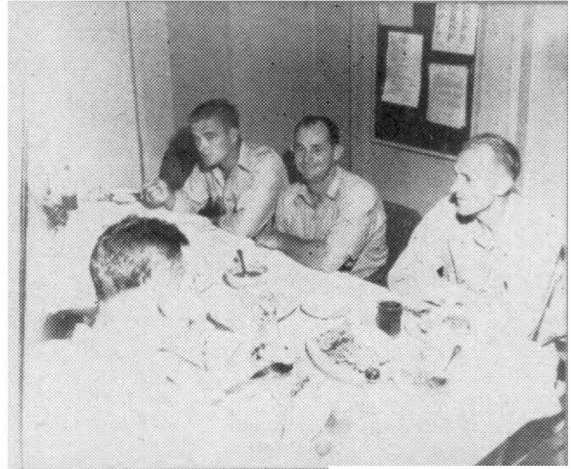
The course of events on the first day of Okinawa occasioned the change which made the KERSHAW the flagship of the Division. On that day the HINSDALE was hit by a Japanese

suicide plane and put out of action. Captain Seyfried and his staff temporarily transferred to the U.S.S. PICKENS for the remainder of the operation and on 20 April boarded the KERSHAW as flagship.

Since then, the only divisional activity in which the Staff participated was in the landing of occupational troops at Aomori. This was accomplished under the command of Captain Leonard B. Austin, present Division Commander.

While the KERSHAW was returning to the land of the free laden down with the treasure of military personnel about to be released to civilian life, the Staff received orders to be prepared to disembark with its records upon arrival on the West Coast. In a few days, then, it will be farewell to the KERSHAW—to Captain Davenport, his officers and men—with a well done for their splendid achievement and their contribution to the Navy's great and successful effort in the war.

PERSONALITIES

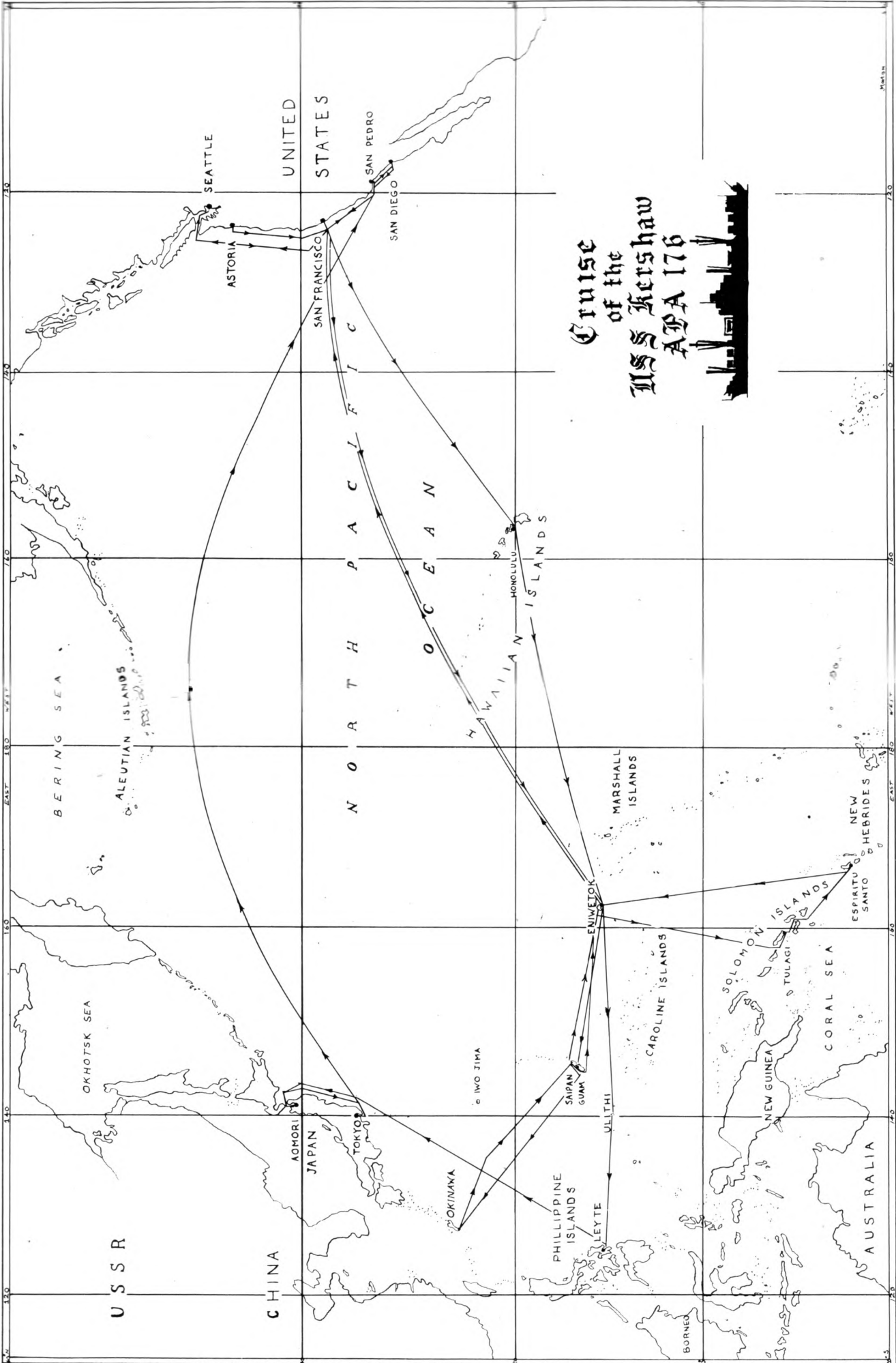


CROSSING THE LINE



HIGHLIGHTS

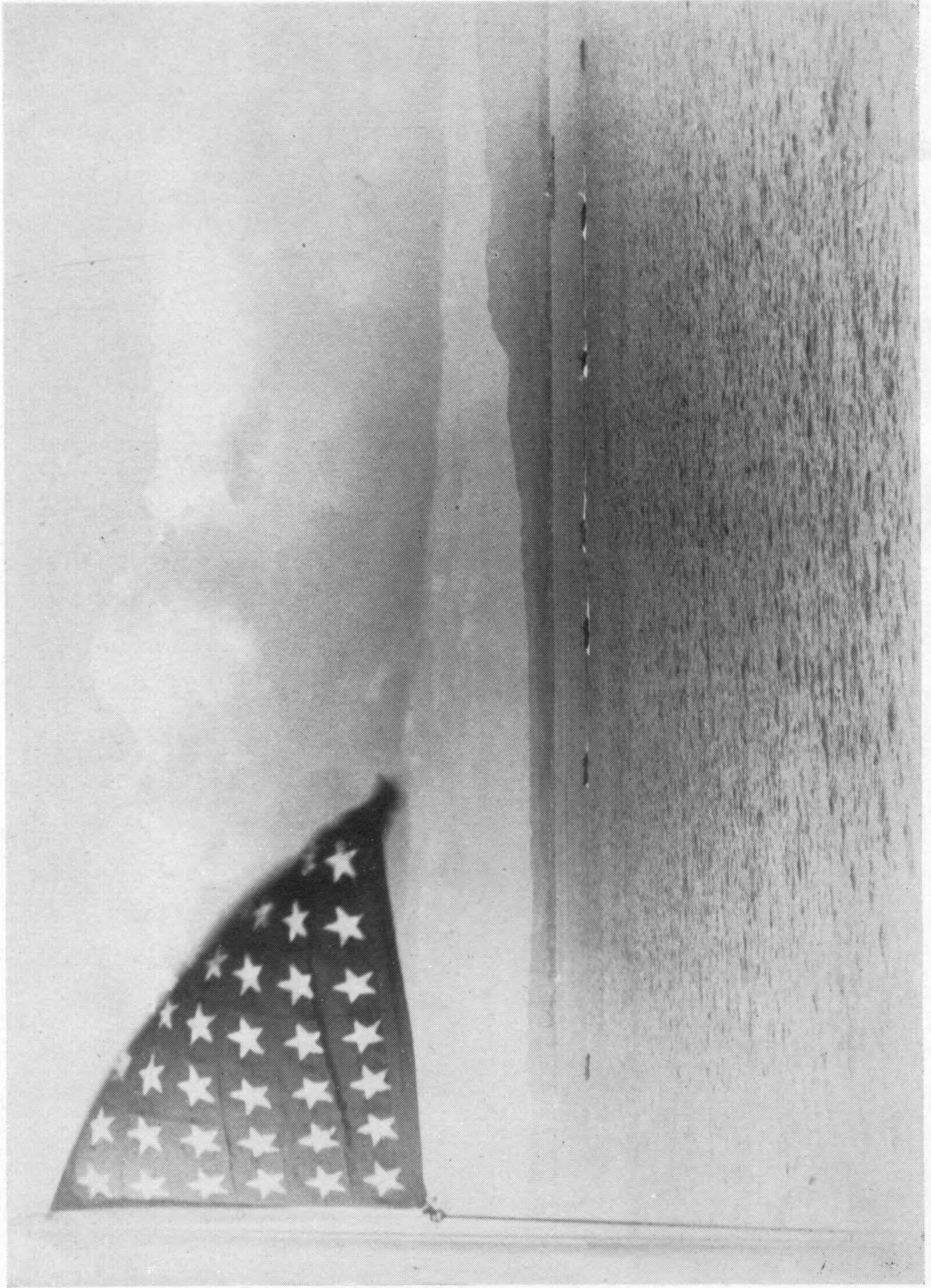
- Keel Laid September 29, 1944
- Launched November 12, 1944
- Commissioned December 2, 1944
- Maiden Voyage February 7, 1945
- Demonstration Assault,
Okinawa April 1, 1945
- Occupation Landings,
Aomori, Japan September 25, 1945
- Magic Carpet Duty,
Tokyo Bay, Japan October 1, 1945



Cruise of the USS Kershaw APA 176



120° 125° 130° 135° 140° 145° 150° 155° 160° 165° 170° 175° 180°
 EAST WEST
 45° 50° 55° 60° 65° 70° 75° 80° 85° 90° 95° 100° 105° 110° 115° 120°
 NORTH SOUTH
 BERING SEA
 ALEUTIAN ISLANDS
 OKHOTSK SEA
 JAPAN
 ADMORU
 TOKYO
 OOKINAWA
 IWO JIMA
 PHILIPPINE ISLANDS
 SAIPAN
 GUAM
 LEYTE
 HAWAIIAN ISLANDS
 HONOLULU
 ENIWETOK
 MARSHALL ISLANDS
 CAROLINE ISLANDS
 SOLOMON ISLANDS
 NEW GUINEA
 STULAGI
 CORAL SEA
 AUSTRALIA
 NEW HEBRIDES
 ESPIRITU SANTO
 UNITED STATES
 SEATTLE
 ASTORIA
 SAN FRANCISCO
 SAN DIEGO
 SAN PEDRO
 USS KERSHAW
 U S S R
 CHINA
 BORNEO



HEADING FOR AOMORI

NOTES FOR A HISTORY

Dates and names of places are not in themselves interesting or very important. They can, however, serve as a framework or skeleton for what is interesting and important, namely, personal experience as recollected in memory. The purpose of this sketch is to provide such a framework for those who made the history of the KERSHAW—the officers and men who were her crew.

Most of the crew first saw the U.S.S. KERSHAW loom up out of a cold misty rain which almost concealed the Columbia River and the town of Astoria on December 1st, 1944. The ship had been built by the Oregon Shipbuilding Corporation at Portland, her keel was laid the 29th of September, and launched on November 12th. On the morning of December 2nd, she was accepted for the Navy, and placed in commission by Captain A. R. PONTO, U.S.N., Commandant of the Naval Station at Astoria. Commander (now Captain) A. G. DAVENPORT, U.S.N.R., assumed command, with Lt. Comdr. Paul D. RUST, Jr. as his Executive Officer, and the work of getting the ship ready for sea began at once. Tons of stores were loaded under constant torrents of rain. Ten days later the ship sailed, to begin a period of shakedown and training which was to last two strenuous months, and take the ship from the rains and fogs of Seattle in December to the sunshine of Southern California.

Training over—landing exercises at Coronado Beach, gunnery practice, convoy tactics, drills at stations and conditions

—and shakedown completed—speed trails, structural tests—the *KERSHAW* was ordered to San Francisco early in February to pick up her first cargo and head for the war in the Pacific. As Flagship of Transport Division 63, she had aboard Captain F. M. O'LEARY, U.S.N., and his staff. As passengers (and "precious cargo") she had the nursing staff of the U. S. Naval Fleet Hospital 115, destined for Guam. Sailing from San Francisco on February 7th she went nonstop via the Hawaiian Islands to Eniwetok, arriving on the 19th. From Eniwetok she sailed in convoy to Guam, arriving on the 25th, disembarking her passengers and freight on the 26th. On the 27th she made a quick trip to Saipan and was assigned to Transport Squadron 15 to prepare for the invasion of Okinawa.

Most of the month of March was spent in loading and rehearsing for that invasion. It was on March 27th that the Squadron headed northwest for what was to be the last big invasion of Japanese territory. The task of Squadron 15 was to make a demonstration on the southeastern shore of Okinawa while the actual landings were being made on the western side, then stand by to reinforce those landings if necessary. On the mornings of April 1st and 2nd the feints were made successfully, against light enemy aerial resistance which caused no casualties or damage to the *KERSHAW*. For the next ten days the Squadron remained in the vicinity of Okinawa. Then, not needed as reinforcements, the return to Saipan was ordered. The news of the tragic death of President Roosevelt marred the happiness of all hands on our safe return. Saipan was reached April 14th.

Memorial Services were held for the late President on April 15th.

The KERSHAW remained at Saipan until June 4th. During those weeks she was transferred to Transport Division 44, as Flagship, and Captain J. H. SEYFRIED, U.S.N., and his staff replaced Captain O'LEARY and staff. Daily drills and battle problems were held as well as daily liberty parties ashore for what recreation the island afforded. Baseball, swimming, and shell-collecting were the chief means of relaxation.

Finally, on June 5th, the Squadron sailed from Saipan en route to Tulagi, Solomons Islands. On the 10th the Equator was crossed and around five hundred pollywogs were received by King Neptune, and initiated into the faithful company of Shellbacks. Tulagi was reached on the 12th. There the Squadron was divided, and the KERSHAW sent with other ships to Espiritu Santo, New Hebrides Islands, to load general stores for shipment to Eniwetok and Guam. She sailed from Espiritu on June 28th, traveling without escort, and reached Eniwetok on July 3rd, remaining there until July 11th. Guam was reached July 14th, cargo unloaded, and on the 20th, the ship headed for San Francisco, arriving on August 2nd.

The ship was placed in the Kaiser Yards, Richmond, for drydocking and minor repairs, leave granted one-fourth of the crew, and plentiful liberty for the remainder. Commander DAVENPORT was promoted to Captain, and Captain SEYFRIED was relieved by Captain Leonard B. AUSTIN. Lt. Comdr. RUST was detached from the ship, and the duties of Executive Officer were assumed by Lieut. SWITZER. The Japanese acceptance of

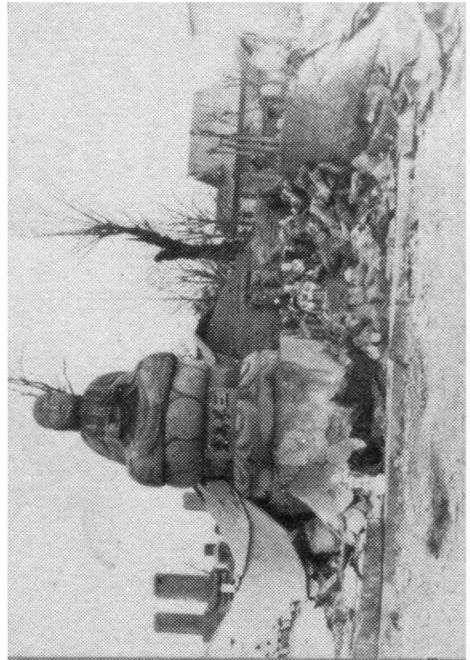
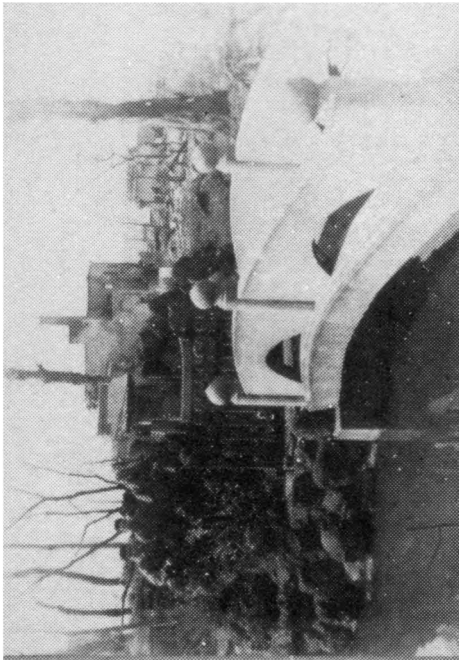
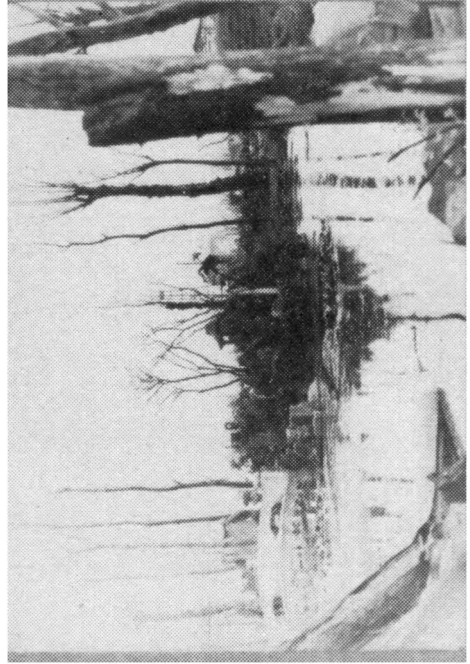
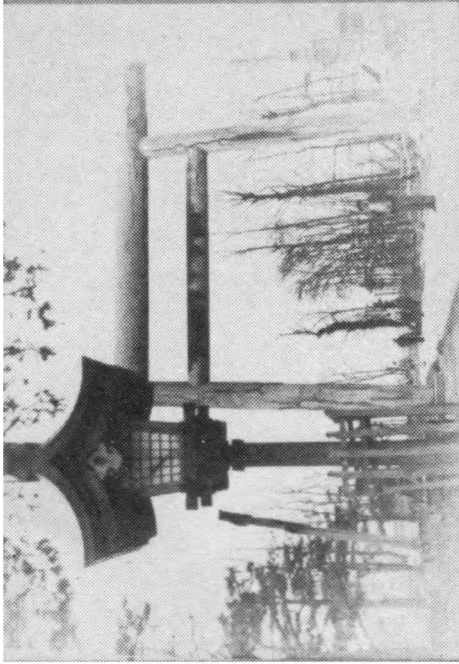
the surrender terms was duly celebrated, and on the 17th of August, the KERSHAW once more headed west, with a cargo of Army personnel bound for the Philippine Islands.

The first stop was, as usual, Eniwetok. From there the KERSHAW sailed in convoy to Ulithi, thence to Tacloban, Leyte Island, arriving September 10th. Disembarking passengers on the 12th, the ship was assigned to a task group for the occupation of Aomori, Honshu Island, Japan. This group sailed for Aomori September 18th, and successfully carried out the occupation on September 25th. From Aomori she went to Tokyo Bay, off Yokosuka Naval Base, to pick up passengers bound for home. On the 7th of October the KERSHAW was again homeward bound with San Pedro as her destination, her E.T.A. October 19th.

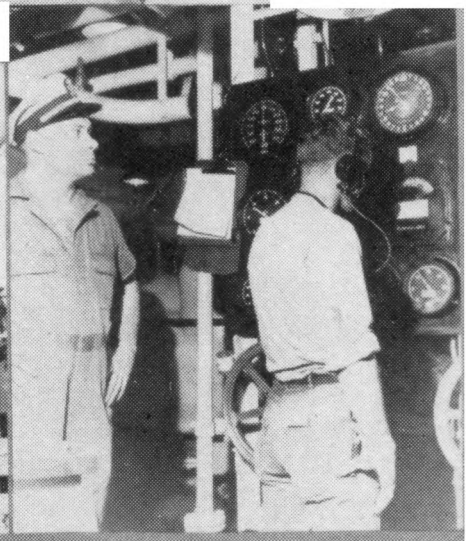
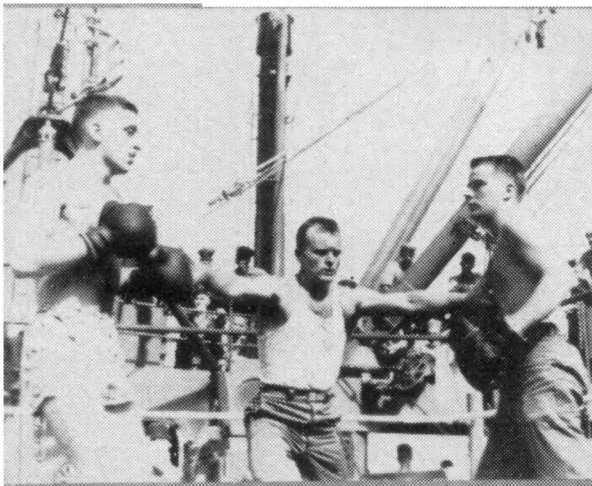
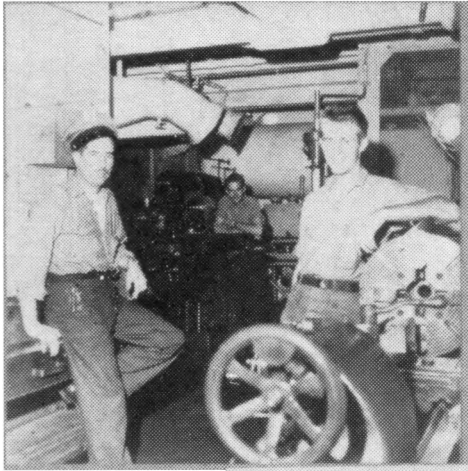


TRANSPORTS OFF AOMORI

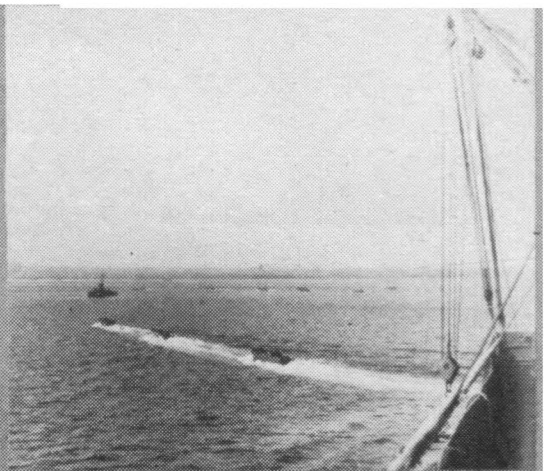
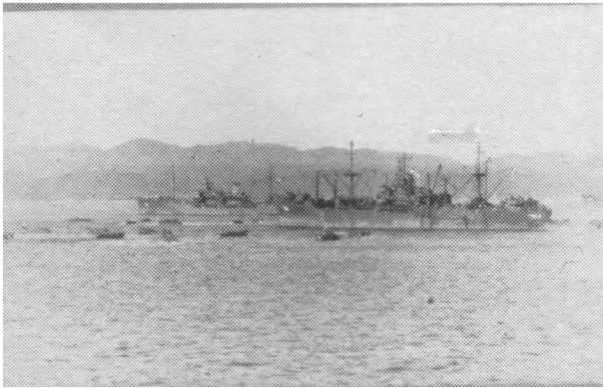
JAPAN

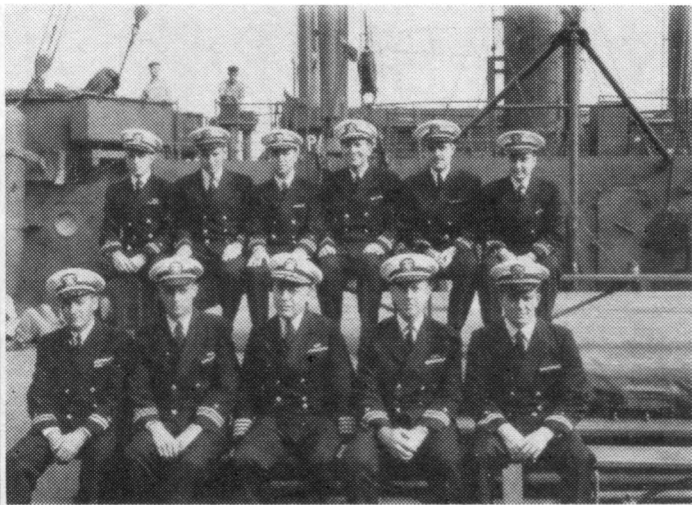
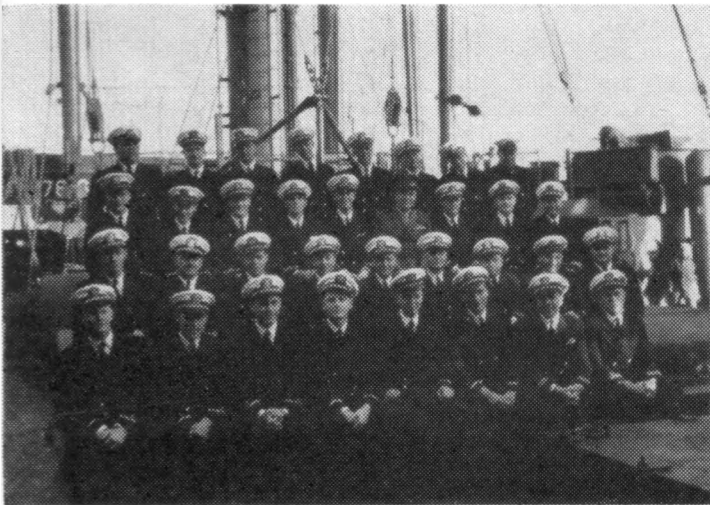


SHIP'S ACTIVITIES

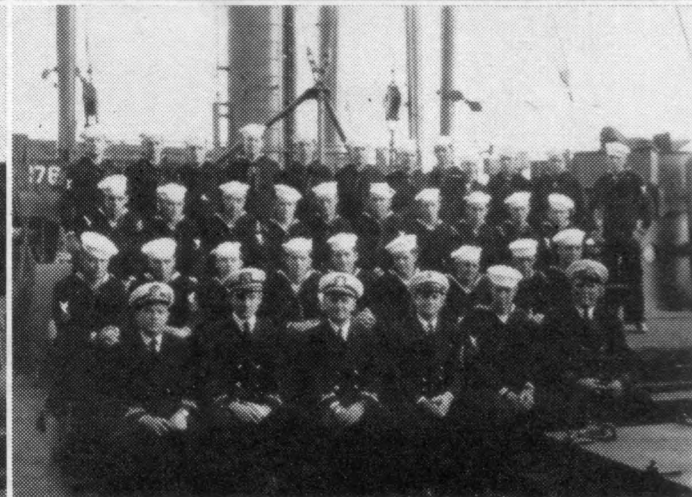
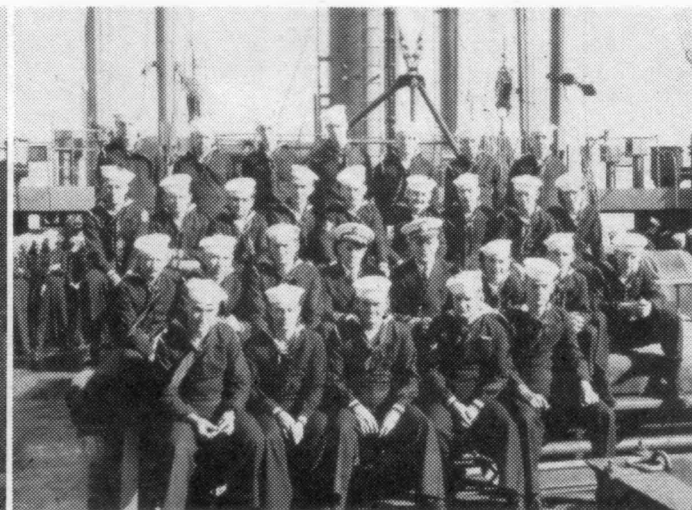
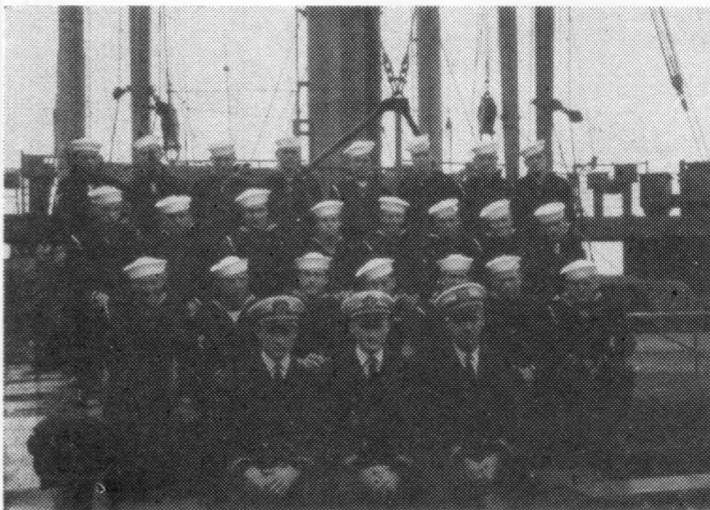


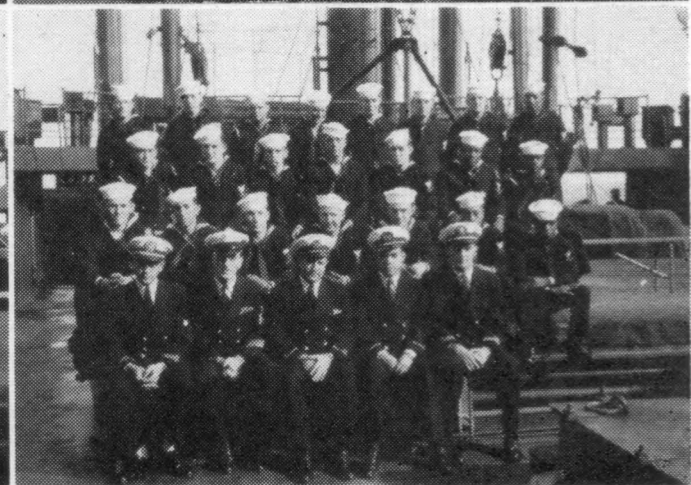
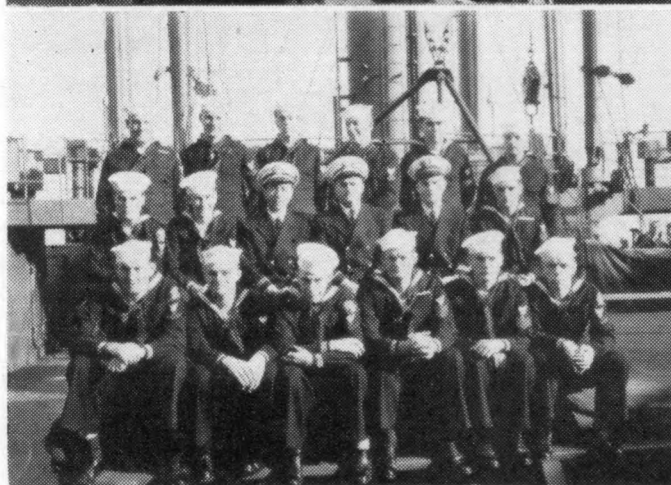
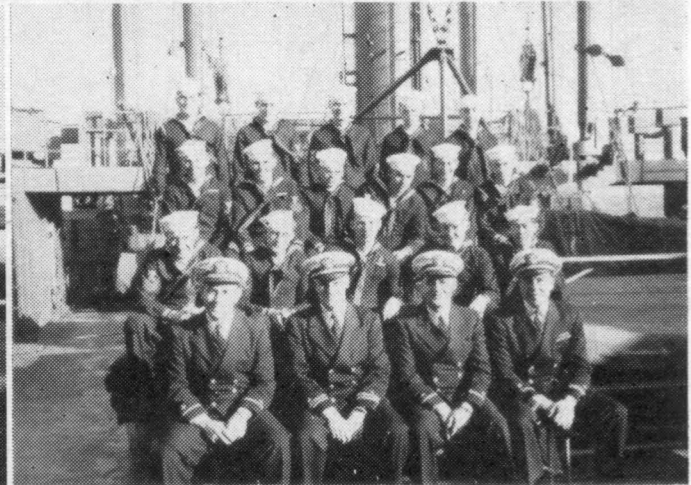
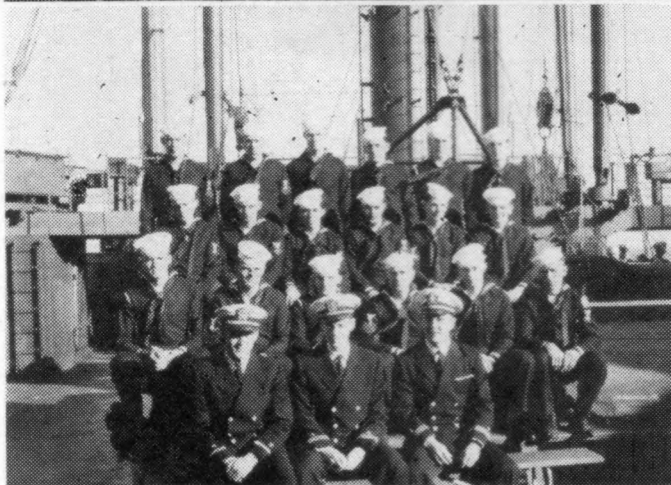
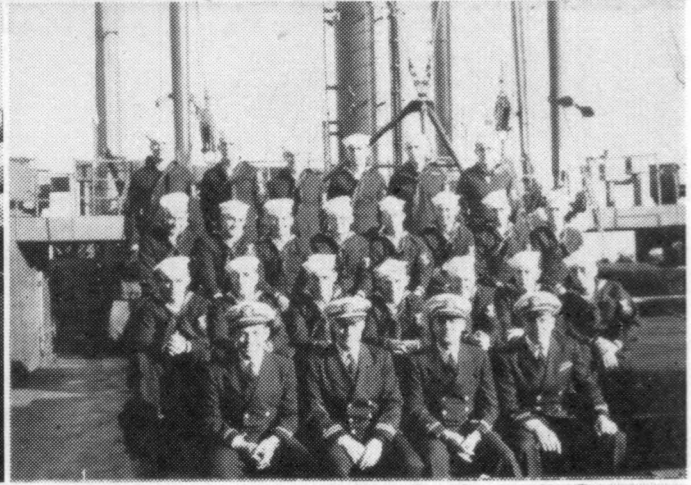
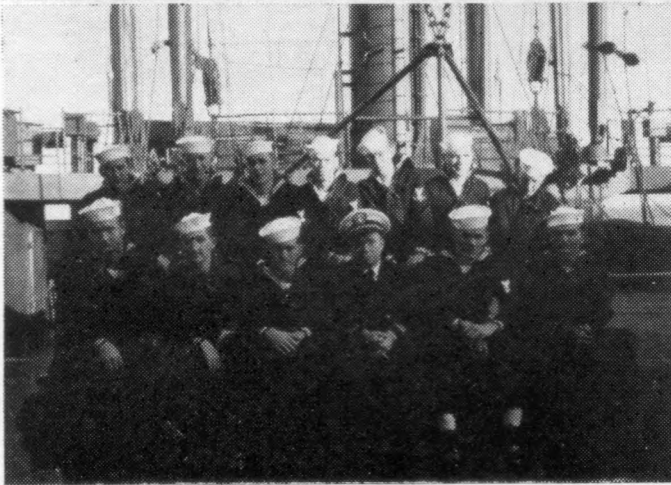
SHIP'S ACTIVITIES

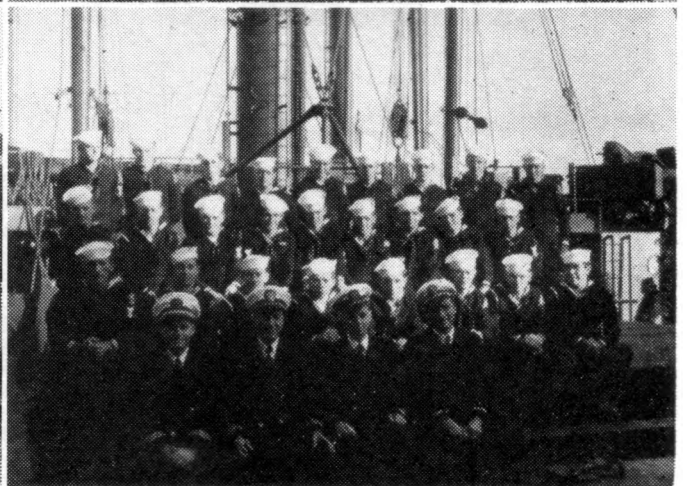
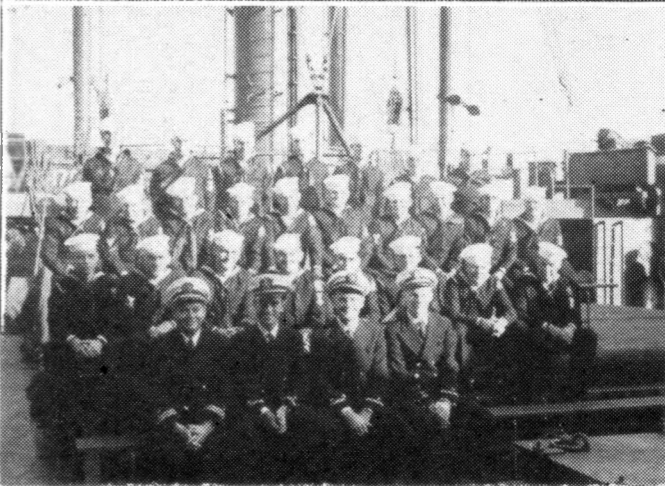
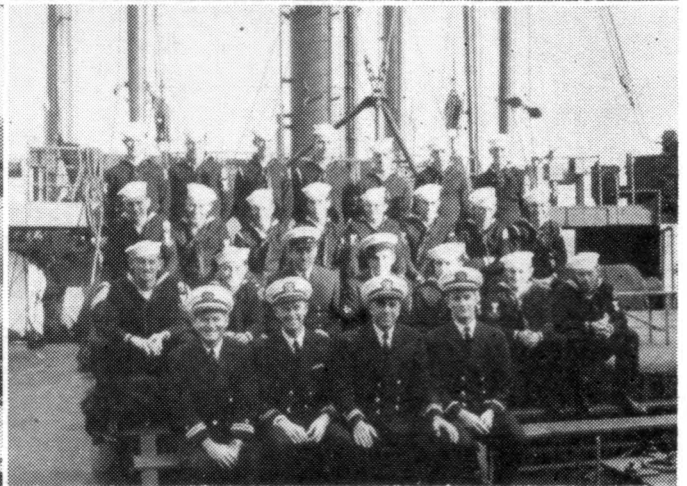
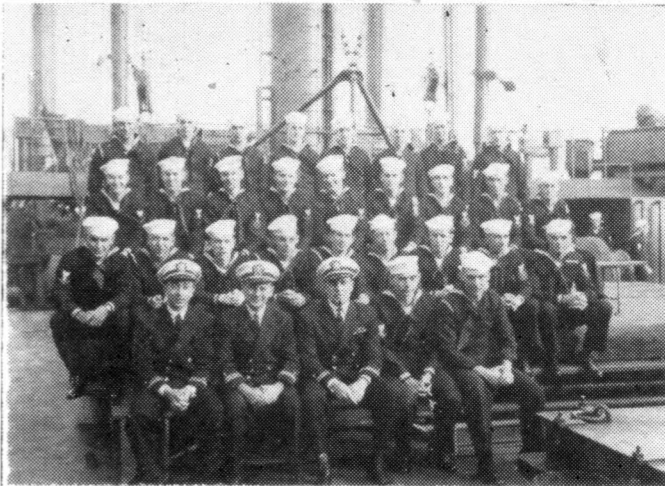
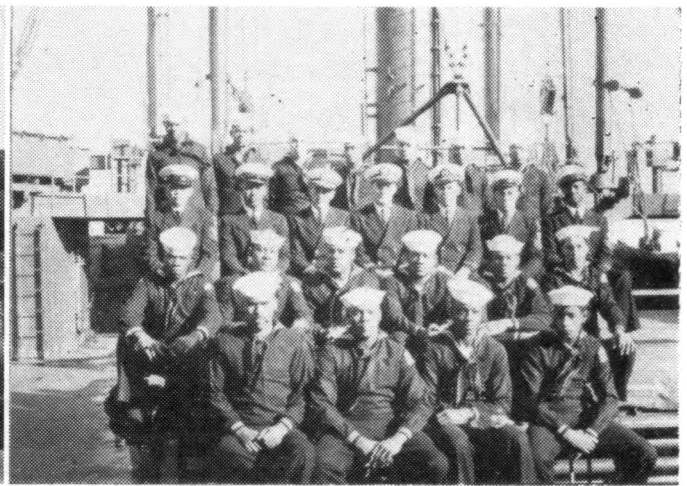
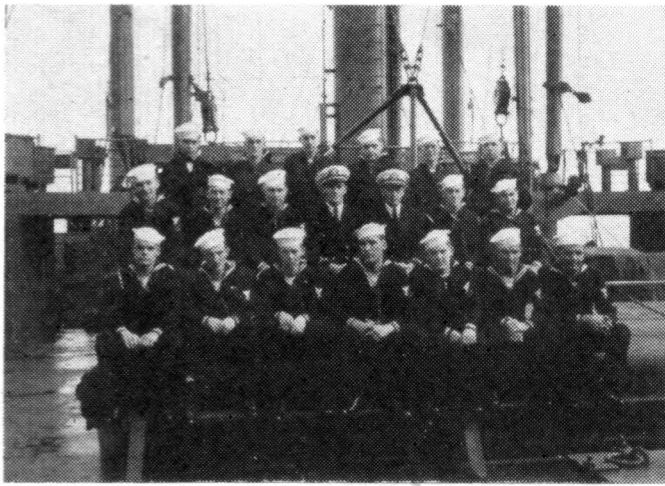




OFFICERS & MEN







ROSTER OF OFFICERS

AS OF 1 OCTOBER 1945

DAVENPORT, Allen G., Captain
SWITZER, Jr., L. T., Lieutenant
EDWARDS, Einar (n), Lieutenant
CHACE, Stewart F., Captain,
USMCR
FURCOLO, Foster (n), Lieut. (j.g.)
WELBOURNE, L. N., Lieut. (j.g.)
POTTZ, Glenn E., Lieut. (j.g.)
IRWIN, W. D., Lieut. (j.g.)
WRAY, Dudley C., Lieut. (j.g.)
McKAY, C. F., Lieut. (j.g.)
MURPHY, Lester E., Lieut. (j.g.)
THOMPSON, Robert R., Lieut. (j.g.)

MITCHELL, George A., Lieut.
(j.g.)
MORTON, Peter W., Lieut. (j.g.)
JOHNSTON, Robert, Ensign
KUNSMAN, Elvin H., Ensign
LESLIE, Lawrence P., Ensign
SCOTT, W. F., Ensign
ULMER, Francis C., Ensign
HARLAN, J. C., Jr., Ensign
BURRUS, E. L., Ensign
BURR, Harry B., Comdr. (MC)
MARINO, John J., Lieut. (j.g.),
(MC)

KEAHOM, G. R., Lieutenant, (DC)
BURSCH, Roy B., Lieutenant, (SC)
McNETT, A. K., Lieut. (j.g.), (SC)
CARPER, Jr., Wood B., Lieutenant,
(Ch C)
WALKER, Jesse D., Ch.PhM.
SPRIGGS, S. M., Ch.Carp.
STROBECK, F. B., Ch.Elec.
SWAN, John T., Bos'n
HATFIELD, Jerome G., A.P.C.
FLEIX, Joe M., A.P.C.
FELTON, Wilbur M., Mach.

BOAT GROUP OFFICERS

ROSENFELD, A. M., Lieutenant
EDMONDS, G. W., Lieut. (j.g.)
BURKE, John F., Lieut. (j.g.)
THOMAS, Jr., W. H., Ensign

HARRIS, Frank H., Ensign
HURLBERT, John A., Ensign
LILLIS, E. J., Ensign
MORELAND, W. D., Ensign

RAMCKE, Carl E., Ensign
SELLARS, Ross D., Ensign
LENTI, Frank M., Ensign
PALMER, W. H., Ensign

BEACH PLATOON OFFICERS

HUFFMAN, Robert E., Lieut. (j.g.)

KLUGE, Richard (n), Lieutenant

OFFICERS WHO HAVE SERVED ABOARD

RUST, Jr., Paul D., Lieut.-Comdr.
SHEA, Dennis G., Lieut.-Comdr.
JACOBBER, Gordon E., Lieutenant
FERGUSON, James E., Lieutenant,
(SC)

TOTTY, Edward A., Lieutenant
MOUNCE, George D., Lieutenant
LAWSON, Hamilton M., Lieut.
(j.g.)

BRAY, Raymond D., Ensign
ROWLETT, John M., Ensign
LONG, James J., Mach.

ROSTER OF OFFICERS OF TRANSPORT DIVISION 63

O'LEARY, F. M., Captain
SAFFORD, R. W., Lt. Comdr.
BOLTON, A. G., Lt. Comdr.

TUTERA, F. J., Lieut.
GOODFELLOW, H. S., Lieut.
TREPAGNIER, O. B., Lieut.
ARNOLD, P. R., Lieut.

SOLOF, H. H., Lieut. (j.g.)
WHITE, D. H., Lieut. (j.g.)
JOHNSON, H. N., Lieut. (j.g.)

ROSTER OF OFFICERS OF TRANSPORT DIVISION 44

FLAG STAFF

AUSTIN, L. B., Captain
BIRD, J. W., Jr., Lt. Comdr.
HOLT, W. J., Lt. Comdr.
ROSENTHAL, J., Lieutenant

WHEATLEY, C. H., Lieutenant
BLOOMBERG, J. E., Lieutenant
BADER, A. J., Lieutenant
THOMPSON, D. E., Lieut. (j.g.)

FELTON, H. L., Lieut. (j.g.)
GELFO, S. C., Lieut. (j.g.)
McMANUS, J. R., Lieut. (j.g.)

The Below Named Officers Have Served with the Flag Staff
Aboard the KERSHAW

SEYFRIED, J. H., Captain

HOPKINS, L. A., Jr., Lieutenant

CROMER, W. C., Lieut. (j.g.)

ENLISTED MEN OF TRANSPORT DIVISION 44

FLAG STAFF

ADAMS, Gilbert C., QM2c
BARTKUS, Edward (n), SM2c
BETHEL, Isaac (n), St3c
CHASTAIN, Delbert A., RM3c
DAVIS, Thomas W., SM3c
DE MARS, Leslie F., RM2c
DURKEE, John B., Sr., Y2c
ELDER, Melvin L., RM3c
FREDERICKSON, Donald W., SM3c

GRAEFF, Whitney S., SM3c
GULLEDGE, Ray E., SM3c
GRAHAM, James F., SM1c
HAMBRIGHT, Robert F., SM3c
HEWITT, Orville J., RM3c
HYSELL, William H., SM3c
JOHNSON, Norman O., SM3c
KEITH, Charles W., RM3c
KERR, James D., Jr., RM3c

KOEHN, Clyde M., Y3c
KROHN, Eugene L., RM2c
KUNATH, Karlton L., RM3c
MAMMEN, Ralph J., CSM
MATTHEWS, Henry, CCk
McCARDLE, Derrold S., Y1c
McNEAL, Everett "D", St2c
McNICHOLS, William F., Stc
NAGY, Eugene (n), Slc

PASKIE, Daniel W., S1c
PIWOWAR, Harry A., SM3c
RATCLIFF, Alfred S., CY
RATTIEN, Hyman (n), RM3c
RUSSO, Joseph (n), QM3c

SEMPLER, Arthur E., SM2c
SHADIX, John W., Jr., SM2c
STOUT, Robert N., QM2c
TENNANT, Marvin E., S1c
VOLK, Raymond (n), RM2c

WAGNER, Herman (n), StM2c
WILLCOX, Donald H., S1c
WINBOURN, Jack W., S1c
ZEHENDNER, Alfred J., Y3c

The Following Named Men Have Served Aboard the KERSHAW with the Flag Staff

SAVIGNAC, Arthur J., CRM
EDWARDS, John R., Y1c

LEAVITT, Harold C., CSM
GOFSTEIN, Melvin, SM2c

PRICE, Eric R., SM2c

ROSTER OF ENLISTED MEN AS OF 1 OCTOBER

ADAMS, Willard E., PhM1c
ALBRECHT, Edmund E., S1c
ANDERSON, Doffie L., SF2c
ARTZ, Harry A., Jr., S1c
BAKER, Robert H., Rdm3c
BARKER, David E., SM3c
BARNES, Frederick E., S1c
BELLOTT, Percival C., Jr.,
MoMM1c
BERNARD, Harold J., SF2c
BLUE, Aloysius (n), Cox
BOULER, Leonard L., S1c
BRIDGES, Elmer T., S1c
BRIGHT, Carl W., Cox
BRIGHT, Lloyd D., GM2c
BROWN, Harry P., RM2c
BUCK, John E., WT2c
BURNETT, James E., S1c
BURTON, Roy D., S1c
BUZZARD, Leon J., S1c
CANNON, Mathew C., Jr., S1c
CARLTON, Billy (n), F1c
CARTER, David E., BM2c
CARTER, James W., S1c
CARTER, Kenneth L., S1c
CHAMPION, Floyd E., S1c
CHINN, Edward Y., St3c
CHISWELL, Wallace E., BM2c
CHRISTOPHER, Vicar A., F1c
CHRISTY, Robert J., Jr., Rdm1c
CHRYST, "J" Freeland, QM3c
CLARKE, John W., BM1c
CLARY, George A., MM2c
CLAYSON, Franklin C., S1c
COLE, John A., Jr., SM2c
COLLINS, Willie C., SC3c
COLTON, Thomas W., S1c
COMENDANT, Frederick (n),
RT2c
CONGER, Wendell G., BM2c
CONTRERAS, Frank M., SC2c
CORN, James L., S1c
COSTELLO, John R., EM3c
COTE, Robert J., S1c
COULIS, Finis (n), SSML2c
CROSBY, Levy A., S2c
DAUBENSPECK, Wayne A.,
RM3c
DAVIS, Francis T., GM3c
DENNIS, Keith A., RM3c
DE ZOUTE, Leslie J., Cox
DIGGINS, Henry, BM1c
DUBIEL, Joseph (n), SF3c
DU VALL, John H., S1c

EISENHOUR, Bert E., Jr., RT2c
ELLIS, Lee (n), GM1c
ERWIN, James C., F1c
EVANS, Albert A., S2c
FARINAS, Thomas W., PhM3c
FARMER, Clarence M., CCM
FEILBACH, Morris G., S1c
FINNICUM, Roy A., CMM
FLEMISTER, Henry J., StM3c
FOX, William E., S1c
FRALEY, Merle O., BM1c
FRASCELLA, Peter T., S1c
FRAZIER, Matthew C., St1c
FREELAND, Herman (n), SKD3c
FRITZ, John M., S1c
GIORDANO, Peter H., GM3c
GIRARDI, Francesco L., GM3c
GREEN, William M., MM1c
GREENE, Willard E., CM1c
GRIFFIN, John B., MoMM3c
HALL, William G., Y1c
HARVEY, Robert B., GM3c
HEAD, Eugene J., Y2c
HEALEY, William L., CPhM
HETLER, Maurice R., AerM3c
HILSINGER, Lane T., F1c
HILT, Andrew F., F1c
HODGKINS, Willis B., S1c
HOLLOWAY, James L., Cox
HORTON, Augustur M., QM1c
HUBBARD, Ralph C., EM3c
HUSTER, George D., EM2c
IACONA, Leonard A., RM3c
ITTNER, Kenneth F., RM3c
JAKLIN, Joseph M., SF3c
JEFFREY, Donald A., FC3c
JOHNS, William S., Y2c
JOHNSTON, James H., EM2c
JONES, Owen R., RM3c
JUSTICE, Felma J., StM1c
JUZYSTA, Norman J., SM2c
KARNOPP, Kenneth V., CGM
KEANE, Joseph P., SM1c
KEEN, Harold W., EM3c
KELLEY, William "R", BM2c
KING, "W" "T", S1c
KINSEY, Bennie (n), SF3c
KNIGHT, John E., S2c
KNORR, Oswald W., Rdm2c
KNUTSON, Paul W., F1c
KROLOPP, William L., F1c
KUNZ, Emil R., S1c
LAROUCHE, Joseph L., EM2c
LAUREL, Mack (n), SC3c

LEWIS, Ralph F., S1c
LIEBER, Farrell C., RM3c
LIGGETT, Jack (n), SSMB3c
LILES, James R., SK2c
LOFFREDO, Anthony J., SM2c
LOLLAR, Roy N., RM3c
LUNDGREN, David I., F1c
LYNCH, William F., GM3c
MADDUX, Carl S., St3c
MANGIAGLI, Sebastian M., S1c
MARINO, Joseph A., S1c
MARKOVETZ, Vernon E., S1c
MARTIN, David D., PhM2c
MATHEWS, Harold N., S1c
MATHIS, Ambrose D., S1c
McCLARY, "P" "L", EM3c
McCORMICK, John F., SC2c
McCOLLUM, Walter F., CEM
McFARLAND, Ellis O., Jr., EM3c
McINTYRE, Thomas D., FC1c
McMIKEL, Clarence (n), StM1c
McNAMARA, John M., PhM3c
McPHAIL, William D., CM3c
MEGARGLE, Darneil D., Bkr1c
MERCER, Robert D., S2c
MERK, Edward A., EM3c
MESSICK, Leo (n), S2c
MILLER, Elmus J., S1c
MILLER, Irwin J., SM3c
MILLS, Edward R., S1c
MILROY, John E., Jr., RM1c
MITTWEDE, William C., Sr., RM3c
MOODY, Joe T., S1c
MUDGETT, John R., WT3c
MULQUEEN, George C., Jr., Y2c
MURRAY, Vernon J., S1c
NALLS, Ando (n), StM1c
NAURUSKAT, Edward H., SK1c
NEIL, Victor K., PhM3c
NELSON, Ira V., CM3c
NELSON, Oswald G., StM1c
NEWBURY, Dean F., SK3c
NEWCOMER, Lloyd R., CCS
NEWMAN, Arthur J., SSMB3c
NICKS, Bert H., Jr., CWT
NOLL, Charles E., S1c
OHLSON, Edward A., Rdm3c
OPPERMAN, Jackie R., RM3c
OVERFIELD, Lloyd F., SC3c
PADDOCK, Raoul W., EM2c
PALUMBO, Gordon J., Cox
PARKER, David W., F1c
PATTERSON, Earl (n), St1c
PEDERSON, Arthur M., S1c

PELZER, Claude F., SSML3c
 PERKINS, Edward (n), StM1c
 PERSONS, David P., S1c
 PETERSON, "J" "D", StM1c
 PEYTON, Glen O., S1c
 PEZZELLA, Nickolas L., RM3c
 PFLEGER, Lawrence E., S1c
 PIEBENGA, Bernard (n), S1c
 PIEPER, Ben W., GM2c
 PIERSALL, Julian T., S1c
 PIVARCHY, William (n) F1c
 PORTWOOD, Max A., QM3c
 POWER, Ellis C., CSF
 PRADO, Juan M., St3c
 PRATT, James R., StM1c
 PROCTOR, Charles W., StM1c
 QUILL, John J., RT3c
 RADBOURNE, Charles A., S1c
 RAMSEY, James R., S1c
 RANDALLS, Robert L., Y3c
 RAY, Leo J., S1c
 REDMOND, John D., Y2c
 RICHARDSON, Harold E., SK1c
 RITCHIE, John B., CMM
 RITCHIE, John J., Y3c
 ROBERTS, Harold E., S1c
 ROBERTS, Royal N., StM1c
 ROBINSON, Berlin V., S1c
 ROGERS, Charles T., RdM3c
 ROGERS, Johnny L., S1c
 ROGHOLT, Marvin J., MM3c
 ROSSMAN, Eugene C., SK2c
 ROUNDS, Ray K., SCB2c
 ROWE, George L., MoMM1c
 RUCKMAN, Harold W., S1c
 RUMELHART, Everett L., S1c
 RUNNELS, Talbert F., F1c
 SADOWSKI, Edmund J., SK1c
 SAMUELSON, Norman W., Jr., RdM3c
 SANDERS, Robey "K", S1c
 SANFORD, Jordan W., F2c
 SAUDER, Charles R., S1c
 SAVAGE, James H., StM1c
 SCHERER, Oscar M., SK3c
 SEIBEL, Charles R., S1c
 SELLMAN, Ernest M., F1c
 SEMPEL, George B., PhM1c
 SENGER, Francis J., SC3c
 SENIOR, William E., S1c
 SHARKEY, Woodron W., F1c
 SHARPE, Robert E., StM1c
 SHAW, Charles (n), St2c
 SHERLOCK, Charles J., Y3c
 SHIPWASH, Sidney J., Sr., WT3c
 SHIRLEY, John C., F1c
 SIMON, Michael S., EM1c
 SIMS, Orville L., S1c
 SMITH, Harold M., S2c
 SMOOT, Riley (n), StM1c
 SNYDER, Earl L., Jr., S1c
 SNYDER, Joseph C., RdM3c
 SOKOL, Alexander J., MaM3c
 SORLIEN, Robert J., S1c
 SPANGLER, Carl R., WT2c
 SPRAGUE, Earl T., GM3c
 STAPLE, George R., PhM1c
 STARR, Ernest E., RdM3c
 STEINERT, John M., S1c
 STEPHENS, Vernon L., StM1c
 STEPP, Leslie G., S2c
 STODDARD, Howard W., Jr., S1c
 STOLZENBACK, Arthur A., RdM3c
 STRASSER, William C., Jr., S1c
 SWAIN, Richard H., RM3c
 TALBOTT, John E., PhM1c
 TANNER, Donal F., S1c
 TATE, Alvin F., FC3c
 TEEPLE, Jerry R., QM2c
 THOMPSON, Theodore R., SSMT2c
 TODD, John F., Bkr2c
 TOM, Yau (n), Ck2c
 TOPLIFF, Philip H., S1c
 TORGENSEN, John (n), F1c
 TRACY, Edward J., MM2c
 TUCKER, Dana F., StM1c
 TYRONE, Sylvester (n), Ck3c
 VALDEZ, Peter T., Bkr3c
 VALLERY, Robert E., Cox
 VANASSE, Nerve L., SF3c
 VANDE BUNT, John N., MoMM3c
 VARIAN, John A., MM2c
 VENCION, John H., St2c
 VENZAUS, Herbert F., CBM
 VER HAGE, Evert J., MM3c
 VOS, Wilbur D., S1c
 WALKER, William E., PhM2c
 WALLACE, Clyde J., SSML2c
 WALSTON, James B., S1c
 WARE, Moses A., StM1c
 WARNER, Wealey F., MM2c
 WARYJAS, Walfer S., MM3c
 WATERS, Francis L., RM3c
 WATTERS, Kenneth E., SSML3c
 WEBER, George F., MM2c
 WEISS, Rudolph F., RM3c
 WELCH, Charles A., MMR3c
 WELDEN, Roger A., S1c
 WHITE, Frank L., MM3c
 WRITEROUR, Albert (n), F1c
 WILCOX, William A., F2c
 WILDE, Samuel M., WT3c
 WILLIAMS, John H., Jr., StM1c
 WILLIAMS, Norman E., SC3c
 WILLIAMS, Robert H., MM3c
 WILLIS, William L., MM3c
 WILSON, Dwaine A., F1c
 WILSON, James C., Jr., F1c
 WILSON, Lester F., F1c
 WINFIELD, Joe L., StM1c
 WINSTEAD, Warren Q., F1c
 WITT, Paul O., MM2c
 WOODS, Norman C., Jr., WT3c
 WORDEN, Raymond D., F1c
 WORDEN, Warren S., SK3c
 WRIGHT, Thomas (n), WT2c
 WRINKLE, Lawrence E., S1c
 WYLY, Robert E., WT2c
 YEE, Johnny (n) SM3c
 YOUNG, Charles A., RdM2c
 ZAHN, Ralph A., BM2c
 ZAMPESE, Marco (n), S1c
 ZASLAW, Kenneth (n), S1c
 ZIEMANN, Theodore R., S1c

ROSTER OF THE ENLISTED MEN OF THE BOAT GROUP

ANDERSON, Willie C., MoMM2c
 BARNETT, Frank W., S1c
 BENEDICT, Wilbur N., Cox
 BENSON, Melvin "C", F1c
 BRICAULT, Raymond F., Cox
 CARLIN, Armond K., RM3c
 CASTANON, John M., S1c
 CORDILL, Charles T., CM2c
 CURE, Joseph E., MoMM3c
 DAMREN, Clayton P., EM2c
 DAY, Alton L., Cox
 DEARMOND, Roy Y., BM2c
 DeDONCKER, Donald R., BM2c
 GARCIA, George (n), S1c
 GORDON, Karl E., F1c
 GUIDRY, Horace J., S1c
 HARBOUR, Walter H., S1c
 HARRIS, Grant L., MoMM3c
 HAUGHEY, Karl J., CMM
 JONES, Thomas P., S2c
 KUFFNER, Alfred J., Jr., Cox
 LAMPKIN, William W., Cox
 LeBLANC, Allon A., S1c
 LeBOEUF, Harry P., S1c
 LESCAULT, Donald J., S1c
 LINCK, Donald L., S1c
 LINDLEY, Gene D., S1c
 LINEHAN, Theron D., S2c
 LIZARDI, Jesus M., S1c
 LOGSDON, Arthur J., S1c
 LOMBARDI, Alvin (n), Cox
 LORANG, Aloysius F., S1c
 LUKACHIK, John (n), S2c
 LYNCH, Dan W., S1c
 MALLAMACE, Peter A., S1c
 MANION, Thomas J., CMM
 MANLEY, Patrick J., S1c
 MARRIOTT, Jack H., MoMM3c
 MARSH, Otto C., S1c
 MARTINEZ, Edward A., S2c
 MATHIAS, Philip J., S1c
 MAYO, Dale A., Cox
 McCARTHY, Robert J., S1c
 McCOLLUM, Charles T., S1c
 McCOY, John H., S1c
 McFATE, Richard N., Cox
 McPHERSON, Robert J., Cox
 MILLIGAN, James P., S1c
 MILLIGAN, Raymond E., Cox
 MORGE, Lawrence Aloysius, Jr., BM2c
 MOUNCE, Howard L., Cox
 MURPHY, David T., Cox
 MUSSULIN, Nicholas (n), SF2c
 NOLAND, Reine A., BM2c
 NORTON, Robert L., MoMM3c
 O'BRIEN, Vernon A., MoMM2c
 ORTIZ, Lenard S., RM3c
 OWEN, Robert H., BM2c
 PAULEY, William G., Jr., S1c
 PAVLIK, Joseph W., Cox
 PAYNE, Thomas O., S1c
 PEHRSON, Douglas E., MoMM3c
 PENLEY, John F., S1c
 PERINI, Fred (n), S1c
 PERKINS, Clyde B., Cox
 PETERSON, Gordon W., S1c
 PETERSON, Kenneth M., BM2c
 PHILLIPS, Warren K., S1c
 PILGREEN, Glen (n), Cox
 PISAK, Herald L., BM2c
 PIZANI, Malvin A., Cox

POWELL, Joe T., S1c
 POWELL, Roy T., S1c
 PRESTON, Malcom D., S1c
 PRICE, Gerald F., S1c
 PRUDEN, Ralph W., Cox
 RABJOHN, Homer D., Jr., S1c
 RANSTROM, Maynard H., S1c
 RAY, Eugene I., BM2c
 RENEGAR, Sheldon S., MoMM3c
 RICE, John T., GM3c
 RIEDER, Charles Alfred Arden,
 S1c

ROBERTS, Arnie C., S1c
 SMALL, Clark A., Jr., SM3c
 SMITH, Alexander (n), MoMM3c
 SMITH, Charles N., MoMM3c
 SMITH, Raymond J., MoMM3c
 SNEED, Jerry M., Jr., MoMM3c
 SOEHRMAN, John A., MoMM3c
 SPAULDING, Walter K., MoMM3c
 STEIGER, Richard C., S1c
 STEVENS, Manuel (n), MoMM3c
 STEVENS, William F., Jr.,
 MoMM3c

STONE, Robert Loe, MoMM3c
 STRICKLAND, Clarence E.,
 MoMM2c
 STROH, Ray L., MoMM3c
 STROJNY, Michael W., MoMM3c
 SUBLETT, Harry H., Jr., MoMM3c
 SWORTZEL, William M., MoMM3c
 SEYMUSIAK, Frank J., MoMM3c
 TALLY, Luther (n), MoMM3c
 VANAUKEN, Floyd A., S1c
 ZEMEK, Rudolph (n), SM3c
 ZMIRPLIS, William R., S2c

ROSTER OF THE ENLISTED MEN OF THE BEACH PLATOON

ANDERSON, Robert J., CM1c
 ARDUS, Peter J., S1c
 DEMISS, William H., Cox
 CASEY, Thomas W., PhM3c
 DE MARS, Claude E., Cox
 ERCOLINO, Francis (n), S2c
 FALLONA, William J., SF1c
 FLORES, Benny V., RM3c
 GIANNORE, Michele J.,
 PhM2c
 GRBA, Michael, Jr. (n), RM3c
 GUARNOTTA, Francis M., S1c
 GUST, Charles E., S2c

HOGAN, John D., PhM3c
 JOHNAKIN, Edward K., Jr., CBM
 JOHNSTON, Robert M., Cox
 KERRILL, Robert W., Jr., S1c
 KIERNAN, John E., Jr., RM1c
 KONOWAL, Stephen J., PhM3c
 LANGLEY, Delbert C., CM1c
 LAYNE, Earl R., RM2c
 LIVINGSTON, Albert J., Cox
 MASON, Elijah C., Jr., S1c
 McCOTTER, Loland C., S1c
 MORRIS, William H., S1c
 RAPER, Douglas C., MoMM1c

RONKOWITZ, Charles M.,
 MoMM1c
 SCHIMAS, Henry F., S1c
 SCHREIBER, Ernest F., PhM1c
 SHEALY, Dewey B., Cox
 SLADEN, George F., PhM3c
 SLAVEN, Kenneth G., PhM2c
 SPEARS, Nack P., Jr., HA1c
 STOEGER, Donald J., SM3c
 TROTT, Clarence B., EM3c
 WEBB, Wayne J., S1c
 WERCHAK, John (n), S1c
 WERKMANN, John (n), S2c
 WRIGHT, Paul D., S2c

The Following Named Men Have Served Aboard the KERSHAW

MIROSAV, Alexander, BM1c
 QUINN, William J., Cox
 GEARHART, Charles M., S2c
 ROBERTSON, George E., Jr.,
 HA2c
 FRANKS, John (n), CMM
 MEASON, John L., StM2c
 RILEY, Donald J., S2c
 SCOTT, Frank T., QM1c
 HARNE, Leo P., CPhM
 HUCKSTEP, Robert L., CWT
 SELZER, Peter J., S2c
 SMITH, Harold M., S2c
 VANDERGRIF, William L., S2c
 STURGILL, Frank (n), BM1c
 TAYLOR, John H., CM2c
 BAZELL, Charles J., CCM
 PICKETT, William F., S2c
 WHITE, Walter B., S2c
 JENKINS, Kenneth L., GM2c
 SMITH, Herbert W., WT1c
 SHUMANS, Hardeman, S2c
 REID, Conrad (n), S2c
 HOWSE, Raymond H., Y1c
 HALLER, Aurburn L., SK1c
 ANDERSON, Morris (n), Y2c
 GRAHAM, Grady L., SK3c
 PATTON, James W., Sk1c
 WILDS, Alton J., Jr., F2c
 RATLIFF, Glenn R., S2c
 KERN, Leonard H., Jr., S2c
 SIMPSON, William T., S2c
 MOFFA, Joseph R., F2c
 SAMEK, Glen M., S2c
 ARCHER, Dewey R., S2c
 SCHAEFFER, Adam D., Jr., S2c
 JOHNSON, Brooks E., StM2c
 HANSEN, Robert C., HA1c
 TEST, Edward L., S1c
 MOZELL, Emanuel (n), StM2c

RAYMER, Marlon (n), S1c
 WILSON, James R., F1c
 WITHERINGTON, Tracy E., SC3c
 LE BLANC, Joseph J., Cox
 THOMPSON, Wilbur D., CSM
 MASSONI, Julius, MM1c
 GRANT, Paul E., S1c
 SAMS, Nathaniel (n), StM1c
 CAMPBELL, Richard F., EM1c
 KOLLER, John F., SF1c
 SCHECTMAN, Samuel (n), EM3c
 KELLEY, Alonza L., MM3c
 MORAN, Francis M., RdM3c
 RHOADS, Earnest A., SF1c
 SMITH, Roy M., Jr., RdM3c
 HEBERT, Gilbert L., EM2c
 KRIZE, Lawrence (n), CBM
 COLLINS, Willie C., SC3c
 MEADE, Richard A., S1c
 WILSON, Maurice G., Ck3c
 McGEE, James J., GM1c
 DeBUSK, John D., CGM
 CAMPBELL, Paul W., MM1c
 CARR, Walter W., Y1c
 CHCIUK, Julius J., WT1c
 CHERRY, Harry O., CSK
 COTNEY, Bob L., SC1c
 DWYER, James T., SC1c
 GUIANG, Frank R., Ck3c
 HARRIS, John S., GM2c
 INGRAM, Joe D., SM1c
 MORSE, Isaac A., Bkr1c
 REICHEL, William P., RM2c
 WHITE, Frederick W., Jr., SM3c
 BALIZS, Andrew (n), Bkr1c
 BRISTER, Naumann D., CMM
 KNOX, Orval D., MM2c
 ACHTABOWSKI, John (n), CBM
 HAWLEY, Hubert L., CRM
 HAYES, Ray W., Jr., CPhM

FOOTT, Frederick A., Jr., CY
 CROFT, Lee R., M1c
 HAYES, Jeffrey (n), Ck3c
 GRAF, Carlton F., RM1c
 HOGLUND, Donald D., WT1c
 KAUTEN, Henry (n), MM1c
 KNIGHT, Grattis D., S1c
 PERRY, Alfred (n), S1c
 STEWART, Clifford L., CCS
 MULL, June P., Cox
 HALL, Julian T., S2c
 KUBIAK, Albert J., S1c
 SHIFLETT, Earl L., F1c
 KESSLER, Frank P., SM3c
 LARSON, Ralph A., SM3c
 GILLIS, Julian V., S2c
 BROZEAN, Nicholas (n), PhM2c
 MERRILL, Marion L., S2c
 REA, William C., S2c
 MILTIER, Winfred P., Jr., Cox
 LADE, Don L., S2c
 RALSTON, Robert J., S2c
 REED, Charles F., S2c
 JONES, Charles P., GM3c
 DIXON, Iddo (n), S1c
 BAILON, Herculano O., S1c
 LOGSDON, Arthur J., S1c
 CHESTNUT, Ollan (n), Cox
 PARHAM, Phillip E., BM2c
 ANDREAS, Richard J., Cox
 MURRIN, Cornelious M., Cox
 ARCE, Migel A., S2c
 BURKE, Peter L., MoMM3c
 MUSCOVITCH, Peter (n), Cox
 DETWILER, Joshua M., MoMM1c
 KAAKE, Douglas W., CBM
 CUSTER, Billie (n), BM2c
 LOMBARD, Edward E., MoMM1c
 CARROLL, Thomas E., SM1c