

# U.S.S. LOWNDES – APA 154

April 2009 Newsletter

Wm. "Bud" Kautz – CCBW, 34782 Hiawatha Trail, McHenry, IL 60051 ((815)344-6326  
redlabelbuddha@comcast.net

.....  
**Reunion dates are September 24<sup>th</sup> – 27<sup>th</sup>, 2009**

Home Base for our 21<sup>st</sup> reunion will be the Marriott Milwaukee West hotel in Waukesha, Wisconsin, W231 N1600 Corporate Court.  
(262)574-0888 for reservations.

**When making reservation be sure to mention – U.S.S. Lowndes reunion.**

Hotel Web Page: [Marriott.com/mkemw](http://Marriott.com/mkemw)  
For anyone with a computer this site will give information regarding the Amenities provided. By the hotel.

Room rate \$90.00 per night, rate in effect 3 days post and prior to reunion dates. Please fill out enclosed stamped and addressed post card as promptly as possible. There are still many postcards to be returned expressing the intentions of the Reunion Group members attending the reunion.

Complimentary Hospitality Room will be at our disposal.  
20% discount on full breakfast buffet at hotel restaurant.

The General Mitchell International Airport is located in Milwaukee, WI. (414)747-5300  
Hotel does not have shuttle service, but use the following for reasonable rates:  
Airport Connections : 1-800-236-5450  
Airport Beyond: 1-262-613-3670

Driving directions to hotel 27 miles W.  
I-94 West (toward Madison). Follow I-94 West to Pewaukee Exit 295 at Highway F. Exit on Highway North. Hotel will be on the left.  
Rental cars are available online.  
Airport shuttles (\$16-\$25) to this hotel are also available.

++++  
This newsletter is late for two reasons, first, items of interest are not reaching your editor for insertion into the newsletter and secondly, your editor has developed a severe case of laziness.

Mail to the following has been returned:

New address for Warren & Albena Proctor:

Mrs. James Bussard  
Sharon Dickson on  
Mrs. Joseph Erlandson  
Edward Finch  
Mrs. John Jurica  
Patrick McGinley  
Gwen Quimby

4201 Walnut Rd.  
Temple, TX 76502

The state of Wisconsin produces over 2 billion pounds of cheese a year.

Territory of Wisconsin was established by Congress In 1836.

**Don Lorenzi**

To all my Northern friends: The weather up north is Frightful—here in Phoenix it's delightful—let it snow, let it snow, let it snow. The seniors up north are freezing while the seniors here in Phoenix are bikini-ing—way to go, way to go, way to go north when it snows (up north). Just turned on the 3 o'clock weather news and my poetic juices kicked in—I'm sure I will hate myself in the morning. Enjoy global warming while it lasts.

*"I see you're a poet, don't know it but your feet show it, they're Long Fellows."*

**Lavada Boyer**

I haven't sent out any Christmas cards this past year as I lost my daughter to cancer and strokes last October 15<sup>th</sup>. I am really sorry to inform you that I won't be able to attend any more of the gatherings. We had planned to be there this past year but illness kept us from going anywhere. I'm fine and still doing well but of course age seems to be getting us all. I am doing OK and been keeping busy. Still golfing a lot and playing my game of bridge.

*"Sorry to hear of your loss but your golf game, I'm sure is much better than mine these days. Haven't played in about 10 years due to back surgery. Just hang in there, we missed your smiling face."*

**Walt Umbarger**

*"Recollections from the past."*

Grass was mowed,  
Coke was a cold drink  
Pot was something your mother cooked in,  
Rock music was your grandmother's lullaby,  
Aids were helpers in the Principal's office.  
There were no credit cards or ball-point pens  
or pantyhose or televisions or dishwashers or  
the pill or air conditioners or frozen foods.

*"Thanks Walt for bringing us up to 'date'."*

I prepared the post card for mailing but also want to let you know why Amelia and I will not be able to attend the reunion. We will be attending a wedding in Richmond, Virginia that weekend. My social calendar has very few weekends checked off but that one was one of them. I was happy to receive the newsletter which I was looking forward to mostly because of concerns about you and Jean because you were not able to be at the San Francisco reunion.

**STRESS**

*The confusion created when one's mind overrides the body's basic desire to choke the living s--- out of someone who desperately needs it!!!*

**Stuart Hyde**

I need some time to assess my ability to make the trip to Milwaukee. Allie and I have pretty much given up on vacation trips. I have to be at the annual convention of the Broadcast Education Association in Las Vegas in April, and that will give me a pretty good assessment of my travelability.

**F.W. Woolworth Co.**

BACON and TOMATO ..... 50c Toasted Three Decker Sandwich	PLAIN or TOASTED SANDWICHES
BAKED HAM and CHEESE ..... 60c Toasted Three Decker Sandwich	HAM SALAD Sandwich ..... 30c
CHICKEN SALAD ..... 65c Toasted Three Decker Sandwich	EGG SALAD Sandwich ..... 30c
HAM SALAD and EGG SALAD ..... 50c Toasted Three Decker Sandwich	AMERICAN CHEESE Sandwich ..... 30c
	PRESSED HAM Sandwich ..... 30c

**FOR A REAL TREAT!**  
TRY OUR SUPER DELICIOUS SANDWICHES MADE WITH VERY THIN AND STACKED SLICES OF WHITE BREAD, TOASTED OR HARD EGG.  
40¢ YOU WILL LIKE !!! 40¢

**Fountain Features**

<b>DE LUXE</b> TULIP SUNDAE 25c 2 Dippers of Ice Cream covered with Crushed Fruit or Fresh Fruit in Season	<b>SUPER JUMBO</b> BANANA SPLIT 39c 11 Bunches covered with 2 Dippers of Ice Cream and Crushed Fruit or Fresh Fruit in Season	<b>EXTRA RICH</b> ICE CREAM SODA 25c POPULAR FLAVORS Made with 2 Dippers of Ice Cream Crushed Fruit or Fresh Fruit in Season
<b>CHOICE OF</b> STRAWBERRY, PINEAPPLE, CHERRY, CHOCOLATE OR HOT FUDGE Topped with Whipped Topping, Crushed Fruit and Cherry King	<b>CHOICE OF</b> STRAWBERRY, PINEAPPLE, CHERRY, CHOCOLATE OR HOT FUDGE Topped with Whipped Topping and Crushed Fruit	

MALTED MILK ..... 25c Popular FLAVORS Made with 2 Dippers of Ice Cream	MILK SHAKE ..... 25c Popular FLAVORS Made with 2 Dippers of Ice Cream	BANANA SPLIT Regular ..... 25c Popular FLAVORS Made with 2 Dippers of Ice Cream	FRESH ORANGE JUICE ..... 20c Large 30c Freshly Squeezed to Order
--	---	---	---

HOT NESTLE'S WITH WHIPPED TOPPING ..... 15c  
AND WAFFLES

APPLE PIE ..... Per Cut 15c  
Home Style Desserts LAYER CAKE ..... Per Cut 15c  
The delicious with ice cream

WOOLWORTH COFFEE - ALWAYS GOOD

**DRINK Coca-Cola KING SIZE 10¢**

Bring back memories?



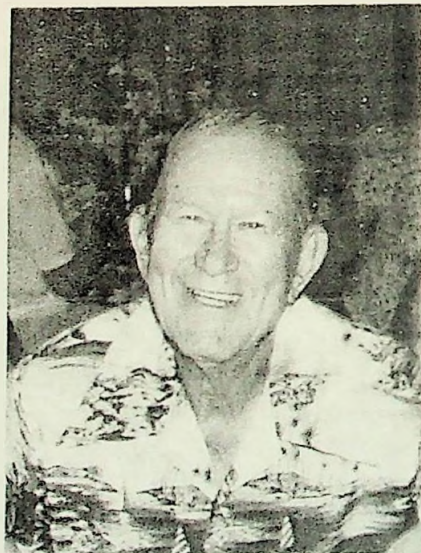
# TAPS

## *Frank Dubois*



Born June 6, 1920 at Pawtucket, Rhode Island. Passed away January 2, 2009. Enlisted in the Navy October 2, 1942 At Jacksonville, Florida boarded the Lowndes in Seattle, WA as a RM3/c. His watch station was in the radio shack. Left the Lowndes December 28, 1945 as a RM1/c (T). As a civilian he attended television school and was hired by a Philco distributor and extended wholesale electronics sales for the next 30 years for various different distributors. Frank loved dancing , he started dancing in his early 20's and then became an instructor with Arthur Murray. He and his first wife started square dancing in 1970, and by 71, he was teaching round dancing, which he continued doing for the rest of his working career. He was cremated. The VA provided several military attendants, they blew Taps and presented me with a folded Flag. Survivors include his wife, Joyce; and several nieces and nephews,

## *Edwin McKellar*



Ed was born on April 29, 1914 at Shawnee, Oklahoma and joined Davy Jones' Locker in January 2009 in Hawaii. In 1932 he enlisted in the Navy at Atlanta, Georgia. Boarded the Lowndes as an APC W1 on September 14, 1944 thereby becoming a Plank Owner. His watch station was in the supply compartment and General Quarters station in the Comm. Office. He left the Lowndes at Norfolk, Virginia on April 11, 1946 as a CPC W2. Later assignments Pac. 13 TKU. China, Commissary store at San Diego, California., NAS Kanoke, Hawaii, NAS Balbene Pt, HI., Naval Station, Pearl Harbor, HI. Last Active duty Naval Station, Pearl Harbor as W2 in 1953 and retired from the Navy October, 1943. Employed by Davidson Meat Co. in Hawaii for 6 months. Manager Pearl Harbor Sub. Base Officers Club January '54 until June '56, Manager Oahu Country Club Honolulu, HI June '56 to June '67, Sales, Davidson Chudacoff Meat Co. from June '67 to May '76. Retired to S.S. May '76. Ed rented a beach house and furnished food and music for the 1998 reunion on a beach in Hawaii while Stan Dunn hosted the event in Honolulu. Incidentally that was the same beach that the Lowndes Beach Party practiced landings with either the Marines or the Army. Prior to the Iwo Jima and Okinawa invasions.



April 2009-4 (IJ-ADD-12)

**WILLIAM HOWARD RILEY – St. George, Utah** – One of the strongest impressions I have of serving on the APA USS Lowndes was during the invasion of Iwo Jima. I remember that early in the morning we were served steak and eggs for breakfast, which was a rare occasion. It was just beginning day light when we arrived in the vicinity of Iwo Jima. I had never seen so many ships in one place at one time. It was a forest of masts. The battleships were firing over our heads with flashes from the big guns. I remember Lt. Commander Berner, who was in charge of getting the landing craft over the side. One day when we were practicing doing this, he threw his ball cap down on the deck and jumped up and down because we weren't getting the craft in the water fast enough. One day, from off the coast of Hawaii, we were to pick up Marines off the beach and take them on board ship. Robert Hail, who had become a good friend of mine, invited me to go with him. He was one of the coxswains on an LCVP. While transporting the Marines, some of them got very seasick. They had to climb up the argo nets with backpacks and rifles. Some of them were too sick to get up the nets and had to be hoisted aboard ship. After returning to the ship, the call came over the sound system for Riley to report to his executive officer. I was told not to leave the office again, where my duties were supposed to be fulfilled. Our ship was loaded with wounded Marines. They were brought aboard the ship with a pulley attached to the side of the ship, which was safer than using the boom. Besides, there were too many to do it that way. Many of the Marines whom we had befriended never returned to the ship and probably never made it through the fighting. The raising of the Flag on Mt. Suribachi was sobering to witness. With the first attempt the Flag went down but then was raised successfully. When all the ships were ordered out to sea, our anchor was lodged in volcanic ash and could not be pulled up. We sat like sitting ducks, so to speak. An expected air attack from Okinawa didn't happen, otherwise we surely would have been sunk. We received some shelling from Mt. Suribachi, but it d'fell short because we were out of range. Actually, our ship was at greater risk at Okinawa.

**STUART HYDE – Corte Madera, CA** – On February 19, 1945, we transported 1,500 Marines and SeaBees from Saipan to Iwo Jima, landing them on Yellow Beach II. For several days. Our landing craft delivered reinforcements, as well as food, fuel, ammunition, and medical supplies, returning to our ship with wounded Marines who were treated by our small medical staff of surgeons and hospital corpsmen. We landed our ship's Beach Battalion of 43 officers and men on Dog-Day plus 1. When we retrieved them on February 24, four of our shipmates had been killed and thirteen seriously wounded. So, in our first engagement, a part of us had been severed. The loss affected all of us, and our bond became much deeper. On March 4, we carried Marine casualties to hospitals on Guam. Of the 321 injured men we treated, only one died from his wounds. A month and a half later, we delivered Marines to Okinawa, where we were in constant danger from Kamikaze attacks.

*“Recently received the above from William H. Riley and Stuart Hyde to be added to the ‘Iwo Jima booklet’ that had been printed previously.”*



## USS LOWNDES ~ 2009 REUNION

Milwaukee, WI ~ September 24<sup>th</sup> - 27<sup>th</sup>, 2009

### Welcome to Milwaukee

Milwaukee is the 22<sup>nd</sup> largest city in the United States, bordering the western shore of Lake Michigan. Metropolitan Milwaukee offers urban, suburban, ethnic neighborhoods, waterfront, industrial and rural settings within minutes of each other. Milwaukee's big-city advantages are enhanced by a friendly small-town spirit and Old World charm. The city's neighborhoods weave a patchwork of diversity, as characteristics of the German heritage blend with influences of many other cultures. In the face of all the progress, the traditions and values that make Milwaukee remain constant. Your reunion tour program will include some of Milwaukee's most popular attractions. Begin at the *Pabst Mansion*, followed by a visit to the *Lakefront Brewery*, which will give you a look and a taste of the beer industry which thrives in Milwaukee and is an important part of the city's history. The tour concludes with an all-you-can-eat fish fry dinner, a wonderful chance to relax with your friends and family. This reunion will offer an unforgettable visit to one of America's best loved cities, and give you memorable experiences to share with family and friends.

### Hotel Information

The reunion officially begins on Thursday, September 24<sup>th</sup> and ends on Sunday, September 27<sup>th</sup>. You will be staying at the full service *Milwaukee Marriott West* which is located at West 231 North 1600 Corporate Court, Waukesha, WI 53186. The Milwaukee Marriott West is in close proximity to many of the area's top attractions.

### Reservation Information

The room rate is \$90.00 plus tax per night, based on single or double occupancy. For those of you who choose to arrive early or stay late, the same room rate is available 3 days before and 3 days after the official reunion dates, based on availability. Please make your hotel reservations NOW by calling the hotel directly at 877-651-7666 between 9-4 pm CST and ask for in-house reservations. Mention that you are with the USS Lowndes Reunion to assure you are associated with your group. You may request specific room types when you call to make your reservations (handicap accessible room, etc.). The hotel check-in time is 3:00pm; please don't expect to get into your room before then. Make your reservations today; you can cancel up to 24 hours prior to arrival without penalty. They will ask you for a deposit or credit card number to guarantee your room reservation. The hotel is holding rooms until they sell out or August 14<sup>th</sup>, 2009, whichever comes first. Don't delay.

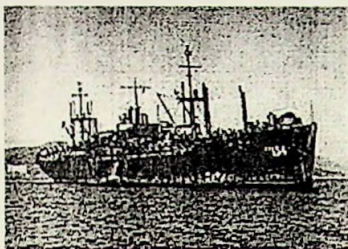
### Transportation & Directions

The closest airport is Milwaukee International (MKE). For those of you driving, the hotel offers plenty of free parking. Contact the hotel directly if you need specific driving directions.

*Travel safely and we will ....*

*See you in Milwaukee*





## USS LOWNDES 2009 REUNION EVENTS

### EVENT A: PABST MANSION, LAKEFRONT BREWERY TOUR & FISH FRY DINNER

Friday, September 25<sup>th</sup> (1:00pm-8:00pm)

Your tour begins at the *Pabst Mansion*; the magnificent Flemish Renaissance Revival Mansion, home of Captain Frederick Pabst, built in 1893. Captain Frederick Pabst was a world famous beer baron, accomplished sea captain, real estate developer, philanthropist and patron of the arts; his home is a testament to his success. Pabst chose the Flemish Renaissance style of his original homeland as the inspiration for the home. Today, the mansion has been restored and furnished to reflect the dignity, graciousness, and affluence of the period in which it was created. Boasting stunning interiors, elegant original furnishings, elaborate wall coverings, the finest wood craftsmanship, intricate ironwork, brilliant stained glass, and rare art, the Mansion helped make the 1890's the "Pabst Decade" in Milwaukee. You will then take the short ride to the *Lakefront Brewery*, a locally-owned microbrewery specializing in handmade beers in the tradition of early Milwaukee brewers. After the tour, take a seat in the *Palm Garden*, a unique warehouse-type atmosphere, where you will enjoy an all-you-can-eat fish fry dinner.

### FREE DAY TO TOUR ON YOUR OWN

Saturday, September 26<sup>th</sup>

There is so much to see and do in the Milwaukee area we are leaving Saturday free so you can visit the sites that interest you the most. You may want to consider the new *Harley Davidson Museum*, shopping at *Old World Third St.*, or touring the *Miller Brewing Company*.

### BANQUET DINNER

Saturday, September 26<sup>th</sup> (7:00pm at the Hotel)

Join your friends for your Banquet Dinner at the Hotel. Cocktails will be available from the cash bar at 6:00pm; dinner will be served at 7:00pm. Entrée choices include *Petit Filet Mignon* or *Chicken Cardinale* (boneless breast served with a lemon butter sauce). Please make your entrée selection on the reservation form.

### TOUR CANCELLATION INSURANCE

Protect yourself from unforeseen expenses caused by sickness, injury or any other causes that impact your travel plans. This insurance enables a refund of Tour & Banquet expenses up until three (3) days before the start of your reunion. If you need to cancel – please call our office immediately (817-251-3551) for a cancellation number. If you have not purchased cancellation insurance all tour and meal money is non-refundable 6 weeks prior to the reunion.

### Important Reunion Notes:

- ~ Tours may be cancelled if a minimum of 30 people per bus is not met. In this case, full refunds will be given.
- ~ Please understand that a certain amount of walking is necessary from the bus to attractions and in some instances to also see the attractions. Please consider your abilities before purchasing tours.
- ~ Be sure to bring photo identification (like a driver's license) on all events.
- ~ All tour times are subject to change. A final itinerary is available at registration.

April 2009-7

# USS LOWNDES 2009 REUNION RESERVATION FORM

Complete and mail this entire form with a check payable to:  
**Military Reunion Planners**, P.O. Box 1588, Colleyville, TX 76034

REGISTRATION FEE -- Everyone Please Pay: \_\_\_\_\_ people at \$15 p.p. =   
{Fee is non-refundable}

EVENT A: *Pabst Mansion, Lakefront Brewery Tour & Fish Fry*  
Friday, September 25<sup>th</sup> (1:00pm-8:00pm) \_\_\_\_\_ people at \$79 p.p. =

Banquet Dinner:  
Saturday, September 26<sup>th</sup> (7:00pm at the Hotel)  
SELECT: Petit Filet \_\_\_\_\_ people at \$45 p.p. =   
OR: Chicken \_\_\_\_\_ people at \$32 p.p. =

Tour Cancellation Insurance: (Protect your money) \_\_\_\_\_ people at \$10 p.p. =

Late Reservation Fee: (If received after August 14<sup>th</sup>, 2009) \_\_\_\_\_ people at \$10 p.p. =

**TOTAL AMOUNT DUE \$**

**>>> PLEASE PROVIDE THE FOLLOWING :**

Name (As you want it to appear on badge): \_\_\_\_\_

Spouse: \_\_\_\_\_

Guest(s): \_\_\_\_\_

Address: \_\_\_\_\_ City : \_\_\_\_\_ St: \_\_\_\_\_ Zip: \_\_\_\_\_

Phone: (Home) \_\_\_\_\_ Phone: (Other) \_\_\_\_\_

E-Mail Address: \_\_\_\_\_

Emergency contact during the reunion: \_\_\_\_\_ Ph: \_\_\_\_\_

\_\_\_ Yes, I have made reservations at the host hotel. Check In Date: \_\_\_\_\_ Check Out Date: \_\_\_\_\_

\_\_\_ I'm attending the reunion, but *not* staying at the host hotel.

Comments/Suggestions: \_\_\_\_\_

**Reservations are due by August 14<sup>th</sup>, 2009** Late reservations accepted on a space available basis with a \$10 per person, late fee. You should make a copy of this form for your records. For information call weekdays: 817-251-3551 or Email: [info@MilitaryReunionPlanners.com](mailto:info@MilitaryReunionPlanners.com). Requests for refunds must be made in writing and postmarked before due date above. No refunds will be made after this date, unless you have purchased *Tour Cancellation Insurance*. There is a \$10 per person refund processing fee. Your cancelled check is your receipt and proof of purchase. There is a \$25 return check fee for NSF. For a written confirmation please enclose a self-addressed, stamped envelope. MRP will not be held liable for failure of vendors to provide contracted services or any injuries/accidents that may occur during the reunion. Sorry, no refunds will be given starting 3 days before the reunion for any reason. Tours require a minimum of 30 people in order to operate. Full refunds given for any cancelled Event.

Date Rec'd:	Check #	Amount\$	XCL #